

Family Fun

Join Alfred the Gorilla on a journey through Bristol's museums & historic houses



www.bristol.gov.uk/museums

2008

MUSEUM OF BRISTOL DEVELOPMENT

Building work has begun on the
£25 million new museum on
Princes Wharf, Harbourside.

This world-class museum will tell the
story of Bristol's history. Expect galleries
with panoramic views, hands-on activities,
working exhibits, a café and much more!

Visit the website below for the
latest news on the development.

Steaming!



As the new Museum of Bristol develops
visitors can still ride on one of the museum's
biggest exhibits – the impressive steam
train. Catch the train from the ss Great Britain
on the Harbourside.

Prices: £3 return, £2 single

Under 6's free

ss Great Britain ticket holders receive £1 off

See calendar for dates (back pages)

The new museum is being funded by
Bristol City Council; a grant of £11.2 million
from the Heritage Lottery Fund; the Museums,
Libraries and Archives Council and
Renaissance South West.

www.bristol.gov.uk/museums

HELLO!

I'm Alfred the Gorilla – one of
Bristol's City Museum & Art
Gallery's star attractions.

Come and find me – and discover
more old and new favourites at
our 5 museums and historic
houses – all free to explore!



My top 5 must see!

Dinosaurs – City Museum & Art Gallery

Dolls, trains and soldiers – Blaise Castle House Museum

Roman mosaic floor – Kings Weston Roman Villa

Kitchen and Housekeeper's room – Georgian House

The Great Oak Room – Red Lodge

Bristol's City Museum & Art Gallery

Behind our glass doors awaits a place that's so wonderful and magical for families to explore that one visit just isn't enough! Bristol's City Museum & Art Gallery tells the story of our world in every display, from the beginning of time to the present day. Here dinosaurs stand, sea dragons swim, minerals sparkle, lions guard staircases, art hangs on nearly every wall and Egyptian mummies rest – and that's just the tip of the iceberg!

Visit www.bristol.gov.uk/museums for information on all our galleries



Egypt Gallery

Our stunning new gallery is now finished. Over 500 objects are on display including cat and crocodile mummies, amazing coffins, offerings for the Gods, statues and beautiful jewellery.

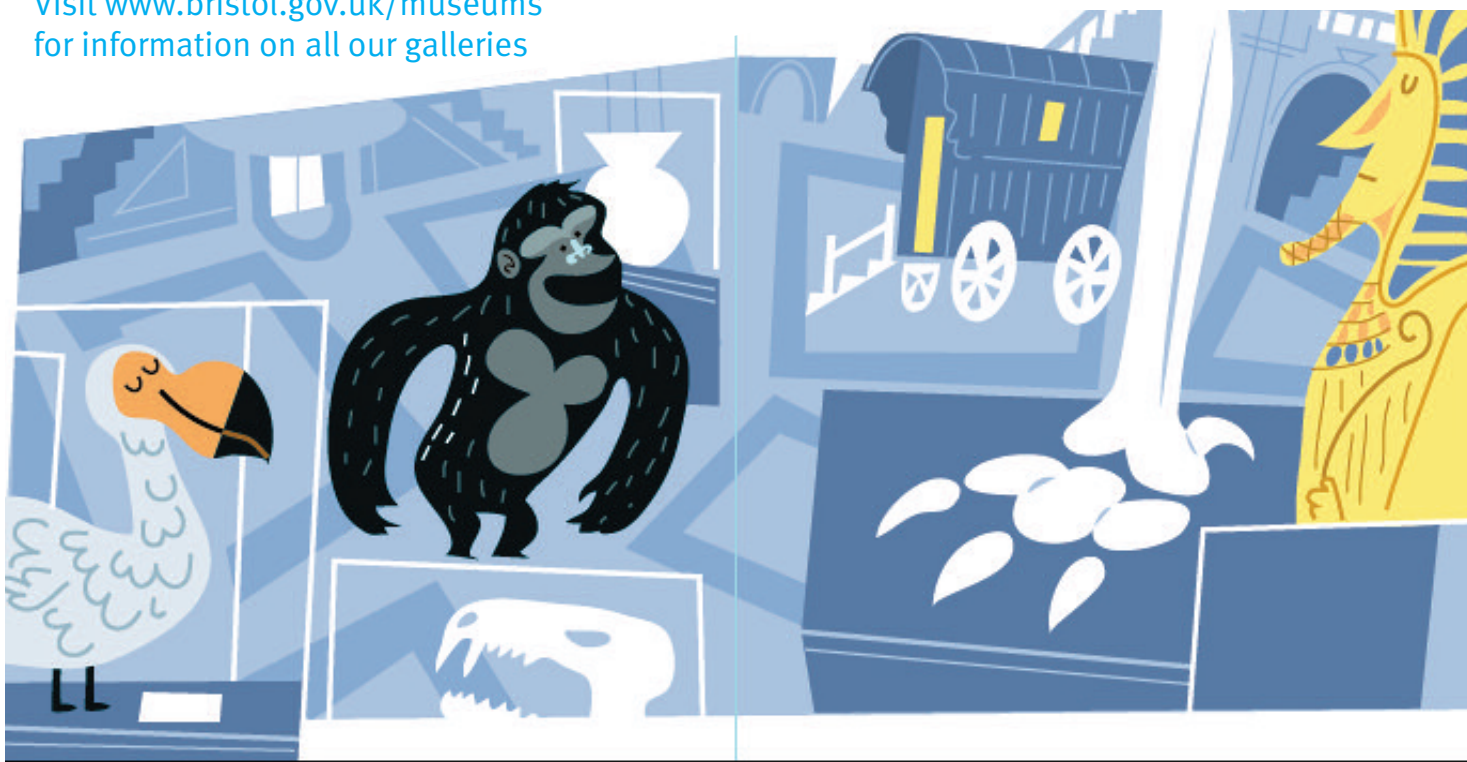


Dinosaur Display

See the best preserved dinosaurs ever found in Britain! Discover more about these incredible fossils in the dinosaur gallery.

Opens May 2008!

New!





Archaeology Store Tours

Explore the basement of the City Museum & Art Gallery where our archaeology collections are kept. Discover objects from Roman (11 May), Prehistoric (14 June), Medieval and Post-Medieval times (9 August).

To book contact Michael Powell on **0117 922 5612** michael.powell@bristol.gov.uk Suitable for 4 years plus – children must have adult supervision.

Sessions last 30 mins. and run at 10.30am, 11.30am and 12.30pm.



Hands on ... activities

Handle real objects and get creative with a range of themed activities every month, such as Strike a Light, Toy Time, Nature's Language, Going Underground and many more! These popular free drop-in activities are run on a first-come first-served basis. Children must have adult supervision.

10am–4pm
See calendar for dates (back pages)

More exciting trails!



Our bright and colourful self-led trails are perfect for all your family to enjoy on your visit. Hunt around the British birds and mammals and art galleries following the trails along the way. Enjoy watching your little ones learn in a fun way – without them even realising!

Seagulls and Seashells for 3–6 years
Down by the Seaside for 7 years +

2 NEW trails from April onwards
Sailing on the Avon for 3–5 years
Life along the Avon for 6+ years

New!

Sessions last 30 mins. and run at 10.30am, 11.30am and 12.30pm.

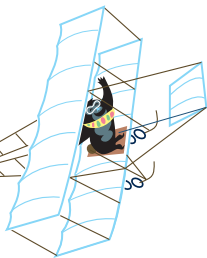
New!



More family friendly areas



play & Learn!



Small World

Our most popular family area in the museum. Small World is a play and learn area for 0–5 year olds, complete with real museum objects, costumes to dress up in, books and beanbags.

Dinosaur Resource Area

Create and draw your own favourite dinosaurs or fossils and explore online information about those amazing creatures!

Eastern Art Resource Area

Create some beautiful rubbings using moulds of traditional eastern designs in a stunning gallery full of tales from the East. How many dragons can you spot?

World Wildlife Resource Area

Draw your favourite animals, listen to different animal noises from all over the world and explore online wildlife information.



Children must be accompanied by an adult at all times in all of our family resource areas.

Food & Shopping

I want a Drink!!

Pop into our friendly café for a quick drink, spot of lunch or a tasty brownie as a treat. Pick up a kids meal deal (£3.50 at time of going to print). All food is homemade with fairtrade and organic options.

Café open:

Sun & Mon 10.30am–4.30pm

Tue to Sat 10am–4.30pm



Can I have my Pocket money now?

Find plenty of things to buy in the museum shop from £1 to £100! Postcards, reproductions of paintings, toys, pens... perfect mementos of your visit.

Plan your trip

FREE ENTRY

Open: Daily, 10am–5pm. Opening hours may be subject to change from Oct 2008

Find us: Queen's Road (top of Park Street), Clifton, Bristol BS8 1RL

By foot: 10 mins. from the city centre

By Car: Two miles from the M32. NCP car parks at West End and Trenchard Street (both a 5 min. walk away)

By bus: Nos. 1, 8, 8a, 9, 40, 41, 54, 55, & 99

By train: Bristol Temple Meads station is a 25 min. walk away, Clifton Down station is 15 mins. away

Facilities: Baby-change; toilets; wheelchairs; loop system at reception; café (highchairs available); shop

Access: Level access entrance; lift to some floors (not to the top floor art galleries or first floor balcony); space to leave buggies in front hall

Website: www.bristol.gov.uk/museums

Tel: 0117 922 3571

Bristol's Blaise Castle house museum

This 18th century mansion house is packed full of incredible objects and displays that show how people have lived from 1700 onwards. Imagine peeking inside your new Victorian dolls house for the first time, playing with tiny toy soldiers, washing in an old tin bath and putting on a beautiful Edwardian dress. The museum is set in over 400 acres of parkland that contains an adventure playground, café and castle – the perfect complete day out for everyone, even the dog!



Plan your trip

FREE ENTRY

Open: Sat–Wed (closed Thur & Fri), 10am–5pm
Opening hours may be subject to change from Oct 2008
Find us: Henbury Road, Henbury, Bristol BS10 7QS
By Car: Leave the M5 at Junction 17. Free car park
By bus: Numbers 1, 20, 21, 43, 43a
Facilities: Nearest toilet in the Blaise Estate café
Access: Restricted due to age of the house, no lift, a staircase, limited space for buggies
Website: www.bristol.gov.uk/museums
Tel: 0117 903 9818

Bristol's Kings Weston Roman Villa

Explore where Romans used to live right on Bristol's doorstep. See the only Roman bath suite in Bristol, mosaic floors and discover Roman central heating. On villa open days try some Roman food (10 May) and meet a Roman soldier (12 July). Join us on Doors Open Day (13 September) for guided walks and object handling.



Plan your visit!

Open: All year. Free entry is with a key – collect from Blaise Castle House Museum or City Museum & Art Gallery. £5 refundable deposit required for the key
Find us: Long Cross, Lawrence Weston, Bristol BS11 0LP
By Car: Leave the M5 at Junction 17. On-street parking
Facilities: No toilet facilities
Access: Access is over uneven grass and foundation walls – no pavement
Website: www.bristol.gov.uk/museums
Tel: 0117 903 9818

Bristol's Georgian House

Restored, decorated and furnished to its original glory the 18th century Georgian House is one of Bristol's finest hidden gems. Imagine seeing the kitchen in full swing, taking a dip in the cold water plunge pool, or relaxing as owners of the house in the elegant upstairs rooms whilst the children were entertained elsewhere. Originally home to John Pinney, a wealthy slave plantation owner and sugar merchant, it is also where the enslaved African, Pero, lived.



Plan your trip

FREE ENTRY

Open: Sat–Wed 10am–5pm. Free. Opening hours may be subject to change from Oct 2008

Find us: 7 Great George Street (off Park Street), Bristol BS1 5RR

By foot: 5 min. walk from City Museum & Art Gallery

By Car: Two miles from the M32. Car parks at College Street and West End

By bus: Nos. 1, 8, 8a, 9, 40, 41, 54 & 55 all stop at the bottom of Park Street

By train: Bristol Temple Meads station is a 25 min. walk

Facilities: No toilet, nearest one at City Museum & Art Gallery. Limited space to leave buggies

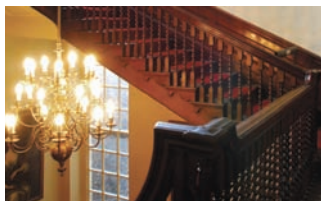
Access: Restricted due to age of the house, no lift, stairs to all floors

Website: www.bristol.gov.uk/museums

Tel: 0117 921 1362

Bristol's Red Lodge

What secrets lie behind the bright red door of the Red Lodge? Still standing proud today, the 16th century house is furnished in Elizabethan, Stuart and Georgian styles and contains one of Bristol's greatest treasures – the Great Oak Room, with its original Elizabethan plasterwork ceiling, oak panelling and carved chimneypiece. From here you can look down onto the beautiful knot garden. The house has been home to many families over the centuries and was once a reform school for girls in the 1800s.



Plan your trip

FREE ENTRY

Open: Sat–Wed 10am–5pm. Free. Opening hours may be subject to change from Oct 2008

Find us: Park Row (above Trenchard Street car park), Bristol BS1 5LJ

By foot: 5 min. walk from City Museum & Art Gallery

By car: Two miles from the M32. NCP car parks at West End and Trenchard Street (adjacent)

By bus: 500 stops by the museum. Nos. 1, 8, 8a, 9, 40, 41, 54 & 55 stop at the top of Park Street.

By train: Bristol Temple Meads station is a 25 min. walk away

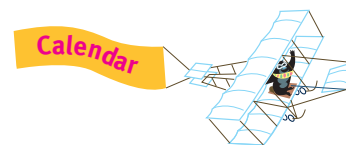
Facilities: Nearest toilet at City Museum & Art Gallery, limited space to leave buggies

Access: Restricted due to age of the house, no lift, steps at the entrance, stairs to all floors

Website: www.bristol.gov.uk/museums

Tel: 0117 921 1360

A quick guide to family fun



April

Sun 06	Hands On... Natural World	City Museum
Mon 07	Hands On... Natural World	City Museum
Wed 09	Hands On... Natural World	City Museum
Sat 12	Steaming! Train Rides £	ss Great Britain
Sun 13	Steaming! Train Rides £	ss Great Britain
Mon 14	Hands On... Going Underground	City Museum
Wed 16	Hands On... Going Underground	City Museum

May

Sat 03	Steaming! Train Rides £	ss Great Britain
Sun 04	Steaming! Train Rides £	ss Great Britain
Sun 04	Hands On... Time for Change	City Museum
Mon 05	Steaming! Train Rides £	ss Great Britain
Sat 10	Villa Open Day	K W Roman Villa
Sun 11	Archaeology store tour	City Museum
Sat 24	Steaming! Train Rides £	ss Great Britain
Sun 25	Steaming! Train Rides £	ss Great Britain
Mon 26	Steaming! Train Rides £	ss Great Britain
Mon 26	Hands On... Time For Change	City Museum
Wed 28	Hands On... Time For Change	City Museum

June

Sun 01	Hands On... Going Underground	City Museum
Sat 07	Steaming! Train Rides £	ss Great Britain
Sun 08	Steaming! Train Rides £	ss Great Britain
Sat 14	Archaeology store tour	City Museum
Sat 21	Steaming! Train Rides £	ss Great Britain
Sun 22	Steaming! Train Rides £	ss Great Britain

July

Sun 06	Hands On... Toy Time	City Museum
Sat 12	Villa Open day	K W Roman Villa
Sat 19	Archaeology Finds Day	City Museum

August

Fri 01	Steaming! Train Rides £	ss Great Britain
Sat 02	Steaming! Train Rides £	ss Great Britain
Sun 03	Steaming! Train Rides £	ss Great Britain
Sun 03	Hands On... Nature's Language	City Museum
Mon 04	Hands On... Nature's Language	City Museum
Wed 06	Hands On... Nature's Language	City Museum
Sat 09	Archaeology store tour	City Museum
Mon 11	Hands On... Toy Time	City Museum
Wed 13	Hands On... Toy Time	City Museum
Mon 18	Hands On... Strike-a-Light	City Museum
Wed 20	Hands On... Strike-a-Light	City Museum
Sat 23	Steaming! Train Rides £	ss Great Britain
Sun 24	Steaming! Train Rides £	ss Great Britain
Mon 25	Steaming! Train Rides £	ss Great Britain
Mon 25	Hands On... Colour Crazy	City Museum
Wed 27	Hands On... Colour Crazy	City Museum

September

Sun 07	Hands On... Natural World	City Museum
Sat 13	Doors Open Day	All sites open
Sat 13	Steaming! Train Rides £	ss Great Britain
Sun 14	Steaming! Train Rides £	ss Great Britain

October

Sun 05	Hands On... Time for Change	City Museum
Sat 25	Steaming! Train Rides £	ss Great Britain
Sun 26	Steaming! Train Rides £	ss Great Britain
Mon 27	Hands On... Time for Change	City Museum
Wed 29	Hands On... Time for Change	City Museum

November

Sat 01	Steaming! Train Rides £	ss Great Britain
Sun 02	Steaming! Train Rides £	ss Great Britain
Sun 02	Hands On... Strike a Light	City Museum

December

Sun 07	Hands On... Toy Time	City Museum
--------	----------------------	-------------

January 09

Sun 04	Hands On... Make that Link	City Museum
--------	----------------------------	-------------

February 09

Sun 01	Hands On... Colour Crazy	City Museum
Mon 16	Hands On... Make That Link	City Museum
Wed 18	Hands On... Make That Link	City Museum

March 09

Sun 01	Hands On... Going Underground	City Museum
--------	-------------------------------	-------------

These events fall in the school holidays in Bristol
 £ Charge for activity, all other activities/events are free

All museums closed 25 and 26 December.
Open all other Bank Holidays. Opening hours
may be subject to change from October 08.

Sign up...

to our free email bulletins for regular updates on future events, new Museum of Bristol developments and details of special offers and promotions in our café and shop.
 Email: family.fun@bristol.gov.uk

Learning opportunities

For information on our services for schools and colleges contact Rita Youseph, Museum Learning Administrator.
Tel: 0117 922 3567 or email rita.youseph@bristol.gov.uk

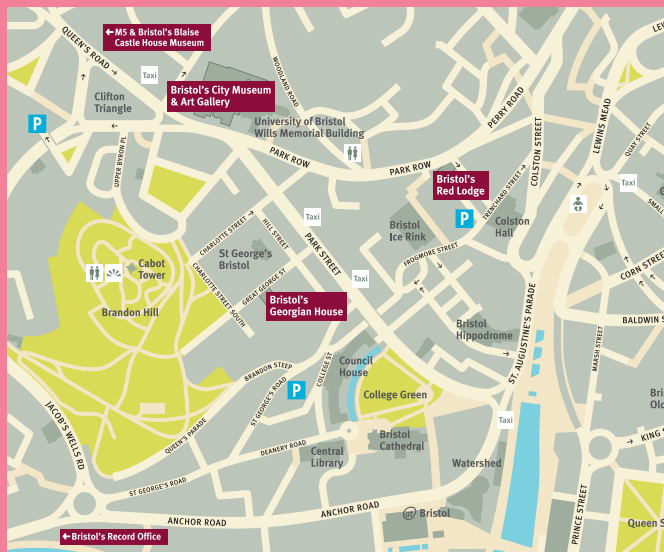


Illustration Ned Jolliffe. Photography Neil Phillips

For information on all our museums contact:

Bristol's City Museum & Art Gallery: 0117 922 3571

Blaise Castle House Museum: 0117 903 9818

Bristol's Red Lodge: 0117 921 1360

Bristol's Georgian House: 0117 921 1362

or go to www.bristol.gov.uk/museums

Look out for our other leaflets:

Hidden Gems, Blaise Castle House Museum

Bristol's City Museum & Art Gallery

(coming soon)



If you would like this information in a different format (e.g large print, computer disk, audio tape, easy English, BSL video or Braille), or in a community language, please contact the Marketing Department, Bristol's City Museum & Art Gallery, Queen's Road, Bristol BS8 1RL. Telephone: 0117 922 4749